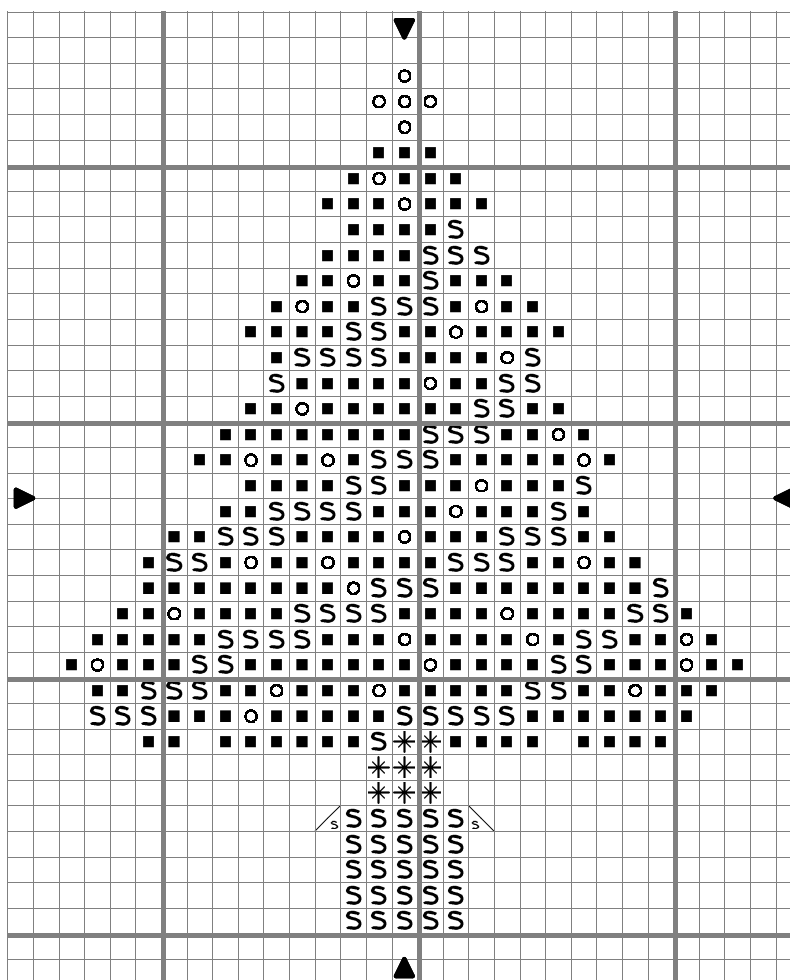


Cross-Stitch-Directory Free Charts - Christmas Tree



	DMC	MH Seed
Stranded Cotton		
✱	Brown	400
■	Prairie green	700
S	Bright red	666

Beads in:

Seed Beads

○	Victoria Gold	02011
---	---------------	-------

Stitch Count 27 x 34

Design Area 4.9 x 6.2 cm at 55 sts per 10cm

Note: For the baubles - Use any colour of bead, alternatively use 1 strand yellow with 2 strands of gold blending filament. Use beads or a star to top off the tree!
 Mix blending filament with the thread to sew the tinsel for a more sparkling effect.
 Do your own thing!

Design by Karen

Copyright © www.cross-stitch-directory.com